

Pop-Facts Demographics Trend - Household Trend

Title Page

Data Version: 2018 Feb (Internal)

Report Generation Method: Single

Analysis Area: 1789 STATE ST, SAN DIEGO, CA, 92101-2530

Reporting Detail: As Selected

Include Map: Yes

Include Labels: Yes

Map Reporting Detail: As Selected

Base Map Style: Claritas Map

Subtotal Method: None

Include Charts: Yes

Analysis Area Detail: No

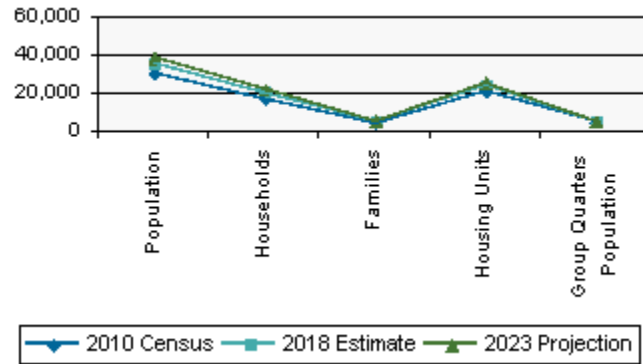
Report Sections:

Household Trend Summary

Household Trend

Pop-Facts Demographics Trend - Household Trend

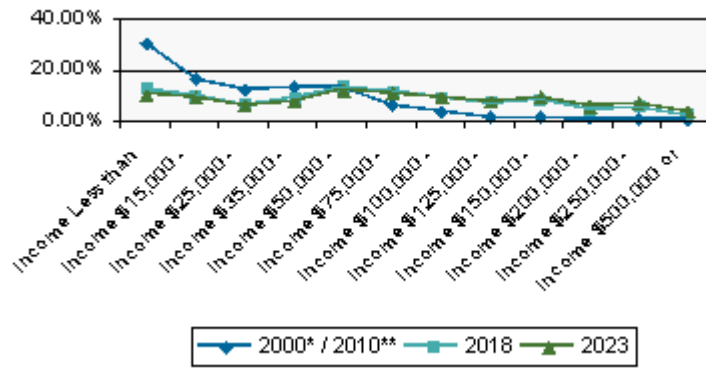
Description	1789 STATE ST, SAN DIEGO, CA, 92101-2530: Radius Analysis Area Group: Radius 1.0 mile(s)				
	2010 Census	2018 Estimate	% Change 2010-2018	2023 Projection	% Change 2018-2023
Household Trend Summary					
Universe Totals					



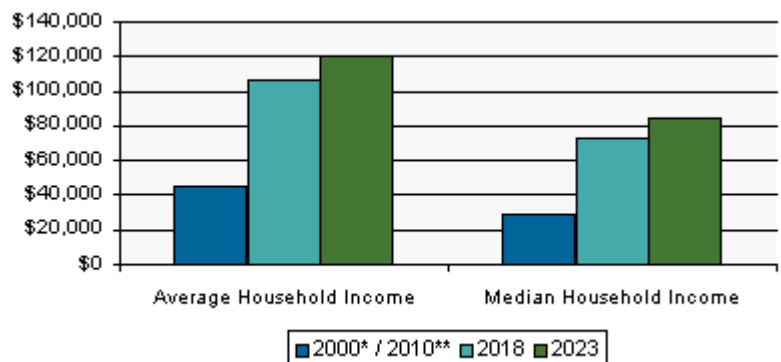
Description	2010 Census	2018 Estimate	% Change 2010-2018	2023 Projection	% Change 2018-2023
Population	29,911	35,486	18.64%	38,179	7.59%
Households	16,895	20,043	18.63%	21,630	7.91%
Families	3,937	4,675	18.76%	5,044	7.89%
Housing Units	20,579	23,765	15.48%	25,380	6.80%
Group Quarters Population	4,695	4,898	4.33%	4,911	0.26%

Pop-Facts Demographics Trend - Household Trend

Description	1789 STATE ST, SAN DIEGO, CA, 92101-2530: Radius Analysis Area Group: Radius 1.0...					
	2000* / 2010**		2018		2023	
	Census	%	Estimate	%	Projection	%
Household Trend						
Total Households by Income	11,473		20,043		21,630	



Income Bracket	2000* / 2010** Census	2000* / 2010** %	2018 Estimate	2018 %	2023 Projection	2023 %
Income Less than \$15,000	3,470	30.24%	2,551	12.73%	2,271	10.50%
Income \$15,000 - \$24,999	1,858	16.19%	1,969	9.83%	2,058	9.51%
Income \$25,000 - \$34,999	1,419	12.37%	1,281	6.39%	1,328	6.14%
Income \$35,000 - \$49,999	1,502	13.09%	1,770	8.83%	1,707	7.89%
Income \$50,000 - \$74,999	1,531	13.35%	2,691	13.43%	2,627	12.15%
Income \$75,000 - \$99,999	702	6.12%	2,271	11.33%	2,371	10.96%
Income \$100,000 - \$124,999	398	3.47%	1,853	9.24%	2,003	9.26%
Income \$125,000 - \$149,999	189	1.64%	1,434	7.15%	1,654	7.65%
Income \$150,000 - \$199,999	161	1.40%	1,688	8.42%	2,062	9.53%
Income \$200,000 - \$249,999	109	0.95%	904	4.51%	1,257	5.81%
Income \$250,000 - \$499,999	90	0.79%	1,126	5.62%	1,489	6.88%
Income \$500,000 or more	44	0.39%	504	2.52%	802	3.71%

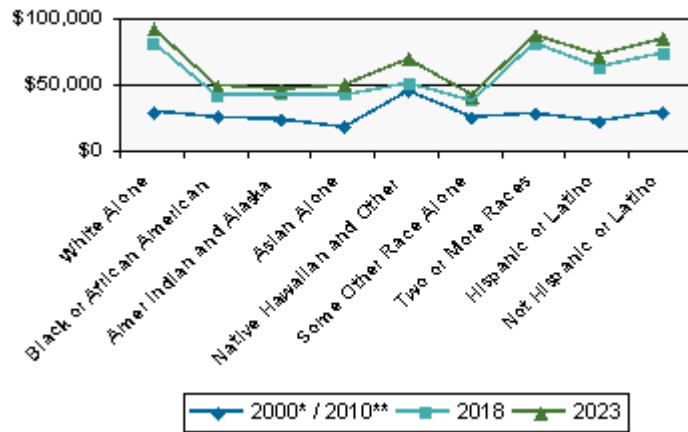


Average Household Income	\$44,127	\$105,638	\$120,306
Median Household Income	\$27,884	\$72,769	\$83,680

Median HH Income by Single-Class. Race*

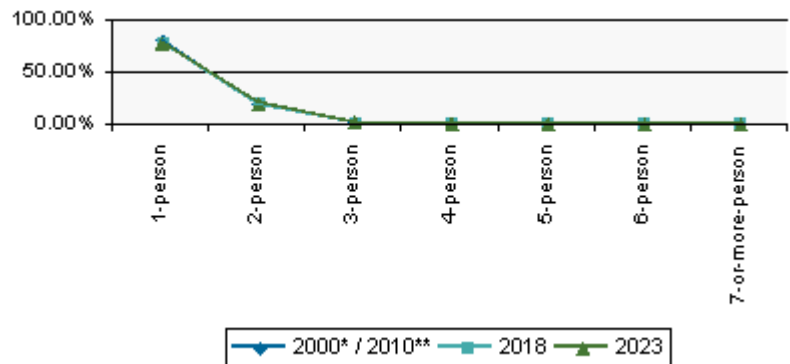
Pop-Facts Demographics Trend - Household Trend

Description	1789 STATE ST, SAN DIEGO, CA, 92101-2530: Radius Analysis Area Group: Radius 1.0...					
	2000* / 2010**		2018		2023	
	Census	%	Estimate	%	Projection	%



White Alone	\$29,353	\$81,001	\$92,596
Black or African American Alone	\$25,535	\$42,119	\$48,940
Amer Indian and Alaska Native Alone	\$23,264	\$42,786	\$46,173
Asian Alone	\$18,557	\$42,630	\$50,368
Native Hawaiian and Other Pacific Islander Alone	\$45,657	\$50,477	\$69,046
Some Other Race Alone	\$25,044	\$37,979	\$41,528
Two or More Races	\$28,174	\$81,080	\$87,255
Hispanic or Latino	\$21,808	\$62,624	\$71,635
Not Hispanic or Latino	\$29,244	\$73,773	\$85,095

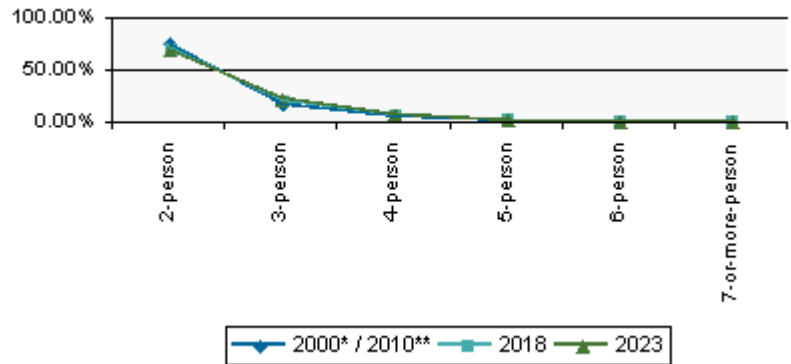
Households by Household Type and Size**



Nonfamily Households	12,959	15,368	16,586
1-person	10,347	11,990	12,850
2-person	2,377	3,020	3,308
3-person	185	289	345
4-person	37	53	64

Pop-Facts Demographics Trend - Household Trend

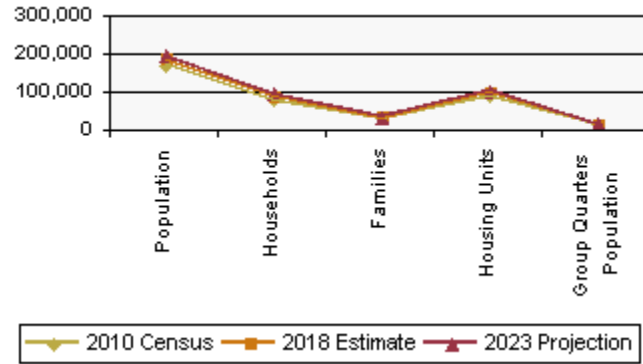
Description	1789 STATE ST, SAN DIEGO, CA, 92101-2530: Radius Analysis Area Group: Radius 1.0...					
	2000* / 2010**		2018		2023	
	Census	%	Estimate	%	Projection	%
5-person	8	0.06%	10	0.06%	10	0.06%
6-person	2	0.02%	4	0.02%	5	0.03%
7-or-more-person	2	0.01%	3	0.02%	3	0.02%
Family Households	3,937		4,675		5,044	



2-person	2,955	75.07%	3,271	69.96%	3,447	68.33%
3-person	649	16.50%	965	20.64%	1,093	21.67%
4-person	235	5.98%	310	6.62%	358	7.10%
5-person	64	1.63%	90	1.92%	103	2.05%
6-person	21	0.53%	25	0.53%	27	0.54%
7-or-more-person	12	0.30%	15	0.32%	15	0.30%

Pop-Facts Demographics Trend - Household Trend

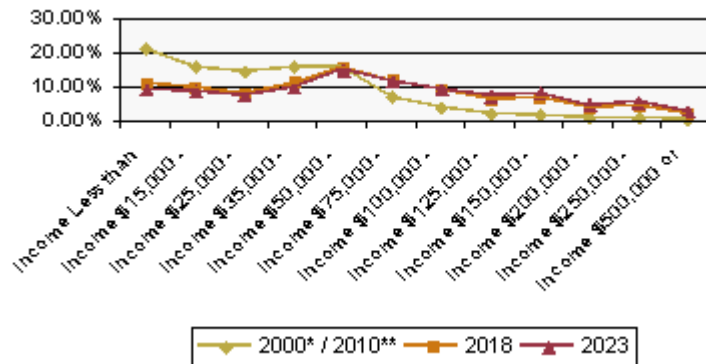
Description	1789 STATE ST, SAN DIEGO, CA, 92101-2530: Radius Analysis Area Group: Radius 3.0 mile(s)				
	2010 Census	2018 Estimate	% Change 2010-2018	2023 Projection	% Change 2018-2023
Household Trend Summary					
Universe Totals					



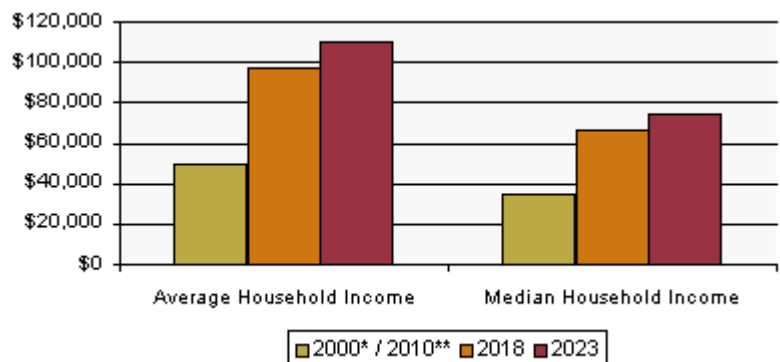
	2010 Census	2018 Estimate	% Change 2010-2018	2023 Projection	% Change 2018-2023
Population	170,244	185,434	8.92%	194,036	4.64%
Households	79,353	87,578	10.37%	92,232	5.31%
Families	29,295	31,833	8.66%	33,339	4.73%
Housing Units	88,368	96,705	9.44%	101,456	4.91%
Group Quarters Population	13,171	13,663	3.73%	13,661	(0.02%)

Pop-Facts Demographics Trend - Household Trend

Description	1789 STATE ST, SAN DIEGO, CA, 92101-2530: Radius Analysis Area Group: Radius 3.0...					
	2000* / 2010**		2018		2023	
	Census	%	Estimate	%	Projection	%
Household Trend						
Total Households by Income	70,088		87,578		92,232	



Income Bracket	2000* / 2010**	%	2018	%	2023	%
Income Less than \$15,000	14,923	21.29%	9,430	10.77%	8,446	9.16%
Income \$15,000 - \$24,999	11,133	15.88%	8,485	9.69%	8,269	8.97%
Income \$25,000 - \$34,999	10,175	14.52%	7,013	8.01%	6,987	7.58%
Income \$35,000 - \$49,999	11,082	15.81%	9,808	11.20%	9,176	9.95%
Income \$50,000 - \$74,999	10,842	15.47%	13,839	15.80%	13,718	14.87%
Income \$75,000 - \$99,999	4,946	7.06%	10,352	11.82%	10,719	11.62%
Income \$100,000 - \$124,999	2,633	3.76%	8,030	9.17%	8,635	9.36%
Income \$125,000 - \$149,999	1,525	2.18%	5,608	6.40%	6,666	7.23%
Income \$150,000 - \$199,999	1,251	1.78%	6,070	6.93%	7,481	8.11%
Income \$200,000 - \$249,999	747	1.07%	3,297	3.76%	4,391	4.76%
Income \$250,000 - \$499,999	582	0.83%	3,843	4.39%	5,038	5.46%
Income \$500,000 or more	248	0.35%	1,802	2.06%	2,707	2.94%

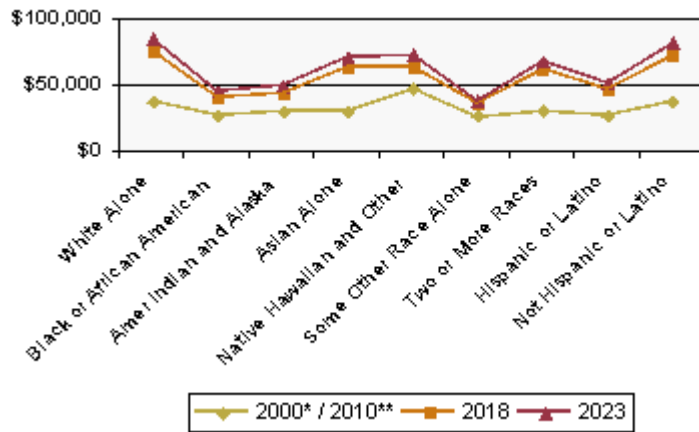


Average Household Income	\$49,208	\$96,580	\$109,117
Median Household Income	\$33,834	\$66,353	\$74,127

Median HH Income by Single-Class. Race*

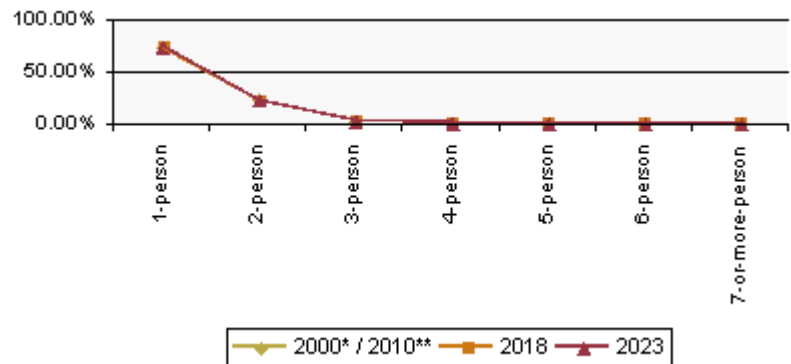
Pop-Facts Demographics Trend - Household Trend

Description	1789 STATE ST, SAN DIEGO, CA, 92101-2530: Radius Analysis Area Group: Radius 3.0...					
	2000* / 2010**		2018		2023	
	Census	%	Estimate	%	Projection	%



White Alone	\$36,846	\$74,943	\$85,110
Black or African American Alone	\$26,462	\$40,136	\$45,146
Amer Indian and Alaska Native Alone	\$29,556	\$43,262	\$49,001
Asian Alone	\$29,798	\$63,320	\$70,193
Native Hawaiian and Other Pacific Islander Alone	\$47,039	\$63,494	\$72,987
Some Other Race Alone	\$26,058	\$35,705	\$37,908
Two or More Races	\$30,118	\$61,248	\$67,227
Hispanic or Latino	\$26,430	\$46,125	\$51,182
Not Hispanic or Latino	\$36,992	\$72,330	\$81,982

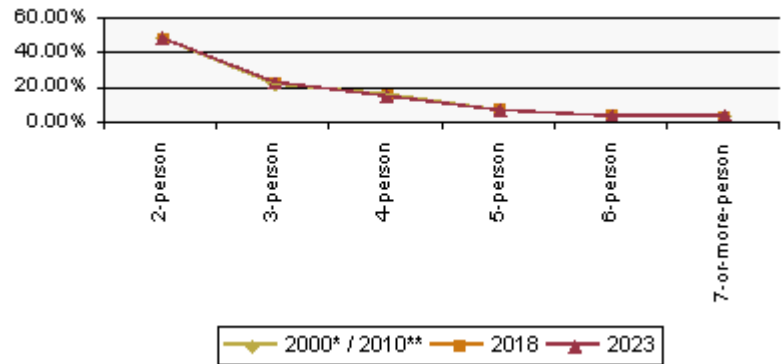
Households by Household Type and Size**



Nonfamily Households	50,058	55,745	58,893
1-person	36,716	40,976	43,346
2-person	11,606	12,820	13,467
3-person	1,280	1,462	1,573
4-person	313	337	354

Pop-Facts Demographics Trend - Household Trend

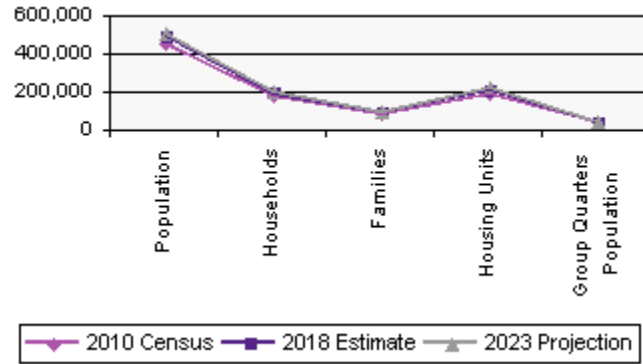
Description	1789 STATE ST, SAN DIEGO, CA, 92101-2530: Radius Analysis Area Group: Radius 3.0...					
	2000* / 2010**		2018		2023	
	Census	%	Estimate	%	Projection	%
5-person	89	0.18%	91	0.16%	92	0.16%
6-person	29	0.06%	32	0.06%	34	0.06%
7-or-more-person	25	0.05%	27	0.05%	28	0.05%
Family Households	29,295		31,833		33,339	



2-person	14,226	48.56%	15,351	48.22%	16,040	48.11%
3-person	6,336	21.63%	7,198	22.61%	7,632	22.89%
4-person	4,510	15.40%	4,801	15.08%	5,008	15.02%
5-person	2,088	7.13%	2,237	7.03%	2,332	7.00%
6-person	1,053	3.59%	1,178	3.70%	1,232	3.70%
7-or-more-person	1,082	3.69%	1,069	3.36%	1,094	3.28%

Pop-Facts Demographics Trend - Household Trend

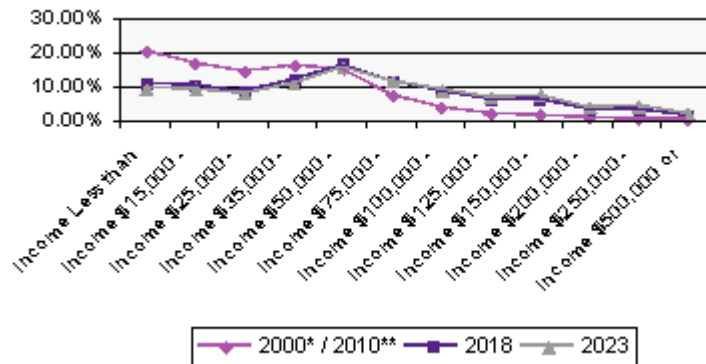
Description	1789 STATE ST, SAN DIEGO, CA, 92101-2530: Radius Analysis Area Group: Radius 5.0 mile(s)				
	2010 Census	2018 Estimate	% Change 2010-2018	2023 Projection	% Change 2018-2023
Household Trend Summary					
Universe Totals					



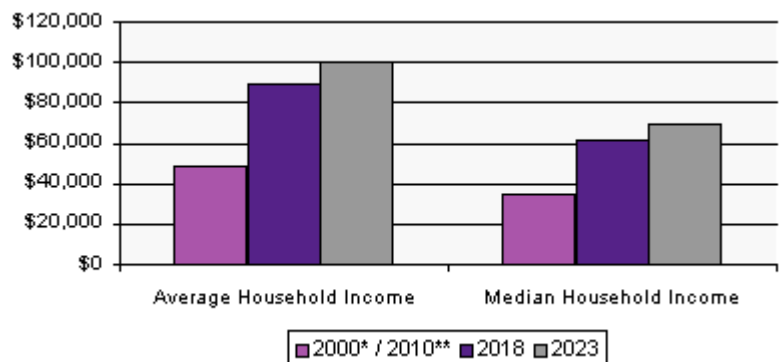
Description	2010 Census	2018 Estimate	% Change 2010-2018	2023 Projection	% Change 2018-2023
Population	455,072	488,261	7.29%	507,659	3.97%
Households	175,093	190,343	8.71%	199,230	4.67%
Families	85,652	91,907	7.30%	95,761	4.19%
Housing Units	191,582	207,111	8.11%	216,182	4.38%
Group Quarters Population	37,213	38,661	3.89%	38,687	0.07%

Pop-Facts Demographics Trend - Household Trend

Description	1789 STATE ST, SAN DIEGO, CA, 92101-2530: Radius Analysis Area Group: Radius 5.0...					
	2000* / 2010**		2018		2023	
	Census	%	Estimate	%	Projection	%
Household Trend						
Total Households by Income	163,358		190,343		199,230	



Income Bracket	2000* / 2010**	%	2018	%	2023	%
Income Less than \$15,000	33,297	20.38%	21,241	11.16%	19,187	9.63%
Income \$15,000 - \$24,999	27,399	16.77%	19,780	10.39%	18,897	9.48%
Income \$25,000 - \$34,999	23,627	14.46%	16,280	8.55%	16,172	8.12%
Income \$35,000 - \$49,999	26,412	16.17%	23,492	12.34%	22,160	11.12%
Income \$50,000 - \$74,999	25,056	15.34%	31,495	16.55%	31,407	15.76%
Income \$75,000 - \$99,999	12,154	7.44%	22,246	11.69%	23,315	11.70%
Income \$100,000 - \$124,999	6,133	3.75%	16,750	8.80%	18,137	9.10%
Income \$125,000 - \$149,999	3,145	1.93%	11,723	6.16%	13,771	6.91%
Income \$150,000 - \$199,999	2,994	1.83%	11,713	6.15%	14,824	7.44%
Income \$200,000 - \$249,999	1,573	0.96%	5,992	3.15%	8,139	4.09%
Income \$250,000 - \$499,999	1,167	0.71%	6,599	3.47%	8,717	4.38%
Income \$500,000 or more	400	0.25%	3,033	1.59%	4,505	2.26%

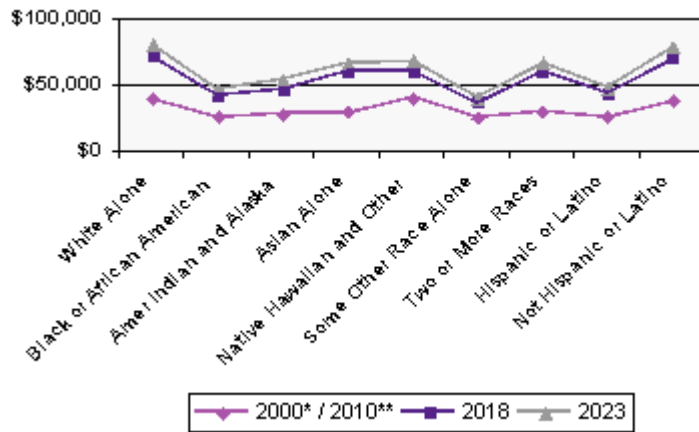


Average Household Income	\$48,224	\$88,431	\$99,591
Median Household Income	\$33,881	\$61,414	\$68,467

Median HH Income by Single-Class. Race*

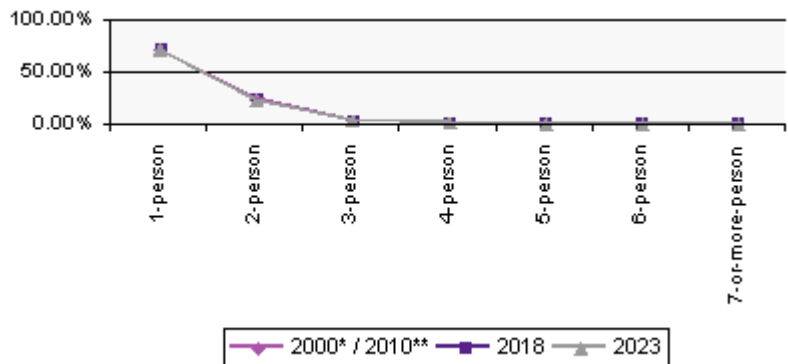
Pop-Facts Demographics Trend - Household Trend

Description	1789 STATE ST, SAN DIEGO, CA, 92101-2530: Radius Analysis Area Group: Radius 5.0...					
	2000* / 2010**		2018		2023	
	Census	%	Estimate	%	Projection	%



White Alone	\$39,097	\$71,323	\$80,228
Black or African American Alone	\$25,982	\$41,902	\$46,511
Amer Indian and Alaska Native Alone	\$27,857	\$46,469	\$53,993
Asian Alone	\$29,040	\$59,844	\$66,250
Native Hawaiian and Other Pacific Islander Alone	\$39,815	\$59,602	\$68,449
Some Other Race Alone	\$24,980	\$36,620	\$39,925
Two or More Races	\$29,625	\$60,484	\$66,831
Hispanic or Latino	\$25,773	\$43,378	\$47,528
Not Hispanic or Latino	\$37,754	\$69,825	\$78,449

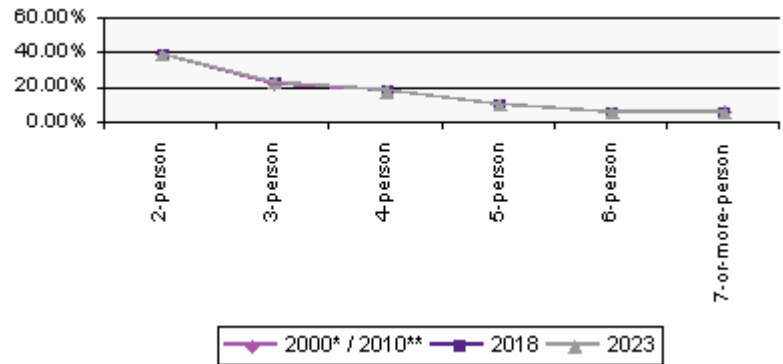
Households by Household Type and Size**



Nonfamily Households	89,441	98,435	103,468
1-person	63,555	70,228	73,989
2-person	21,319	23,127	24,132
3-person	3,171	3,563	3,769
4-person	924	1,008	1,052

Pop-Facts Demographics Trend - Household Trend

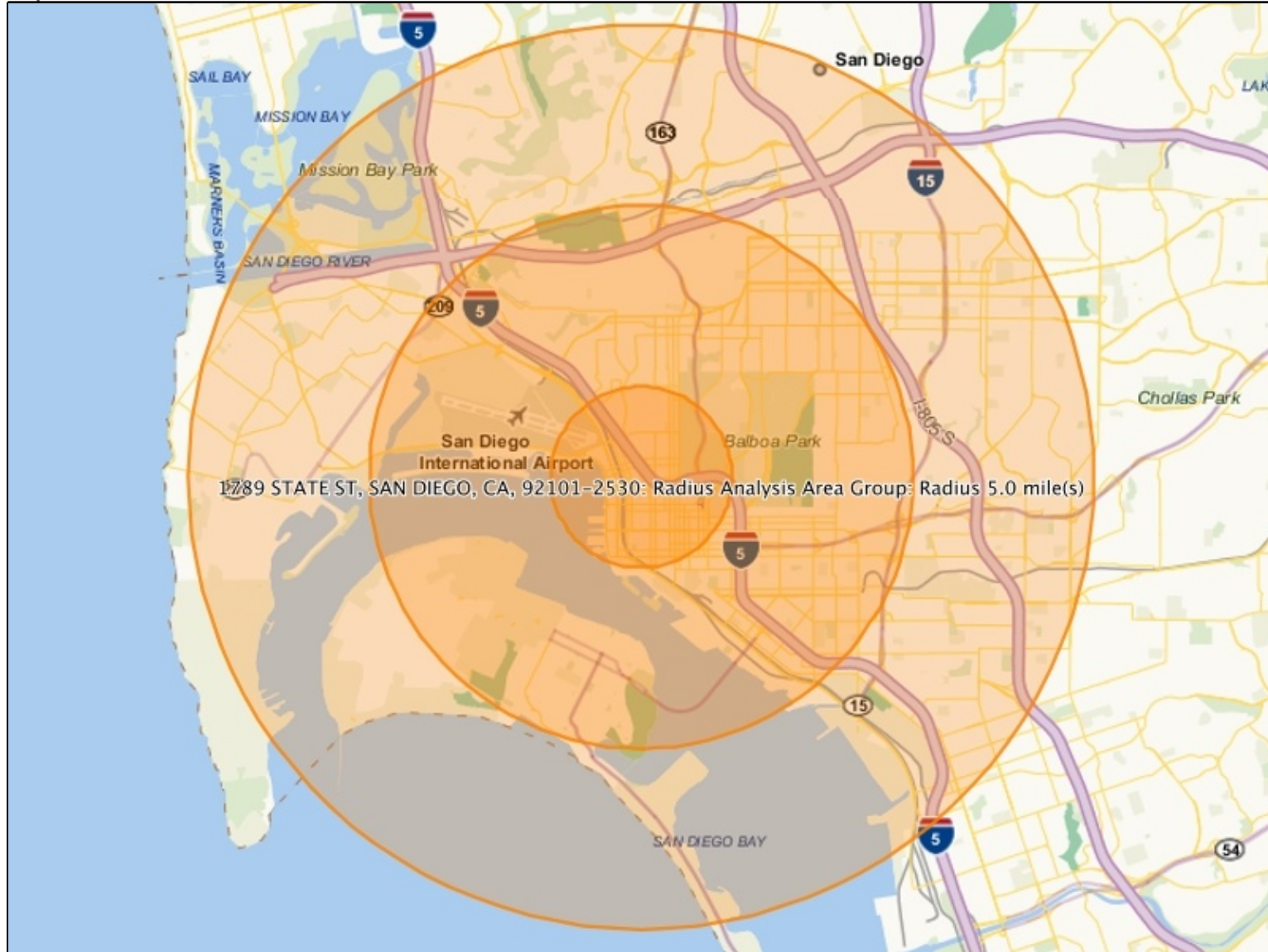
Description	1789 STATE ST, SAN DIEGO, CA, 92101-2530: Radius Analysis Area Group: Radius 5.0...					
	2000* / 2010**		2018		2023	
	Census	%	Estimate	%	Projection	%
5-person	303	0.34%	324	0.33%	335	0.32%
6-person	96	0.11%	109	0.11%	113	0.11%
7-or-more-person	75	0.08%	77	0.08%	78	0.08%
Family Households	85,652		91,907		95,761	



2-person	33,112	38.66%	35,595	38.73%	37,096	38.74%
3-person	18,947	22.12%	20,819	22.65%	21,842	22.81%
4-person	15,475	18.07%	16,356	17.80%	16,990	17.74%
5-person	8,779	10.25%	9,332	10.15%	9,688	10.12%
6-person	4,492	5.24%	4,890	5.32%	5,103	5.33%
7-or-more-person	4,847	5.66%	4,916	5.35%	5,043	5.27%

Pop-Facts Demographics Trend - Household Trend

Map



1789 STATE ST, SAN DIEGO, CA, 92101-2530

- Radius 1.0 mile(s)
- Radius 3.0 mile(s)
- Radius 5.0 mile(s)